



THERMIT

Insulated Rails Joints
**FOR RAILWAY
SYSTEMS**

THERMIT THERMABOND

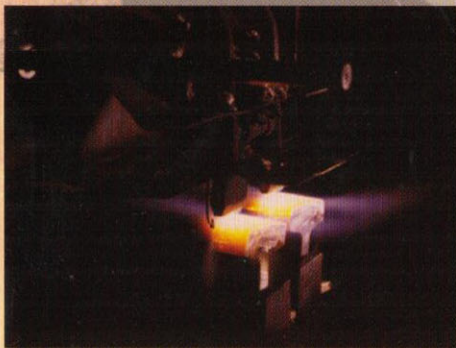
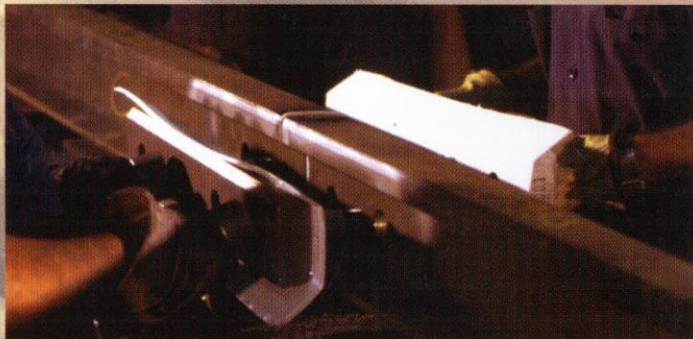
FACTORY ASSEMBLED GLUED INSULATED

RAIL JOINTS

The Thermit glued insulated rail joint is factory assembled to give guaranteed performance and extended life under the heaviest traffic conditions. Manufactured in our Brisbane factory, the quality of the Thermabond rail joint is ensured because of the close control over all manufacturing and assembly operations.

FACTORY ASSEMBLED

The rail joint is manufactured using high strength machined joint bars bonded with Thermabond epoxy which provides a significantly greater shear strength for maximum joint life.



AUTOMATIC FLAME HARDENING

As a factory manufactured joint, the Thermabond rail joint offers the additional feature of factory hardened rail running surfaces in the joint area. A proven hardening and tempering process is applied to the rail ends to provide running surface hardness in excess of 320 HB to a depth of 10mm, with no formation of undesirable martensitic steel structures.

THERMABOND IN TRACK

Over 30,000 Thermabond rail joints manufactured by Thermit Australia Pty Ltd have been installed in track and are proven under the most severe operating conditions. The joint assembly can be supplied in rail lengths up to 6 metres, assembled with either high strength or Huck bolts.



THERMIT MT TYPE

FIELD INSTALLATION GLUED INSULATED STEEL FISHPLATE JOINT

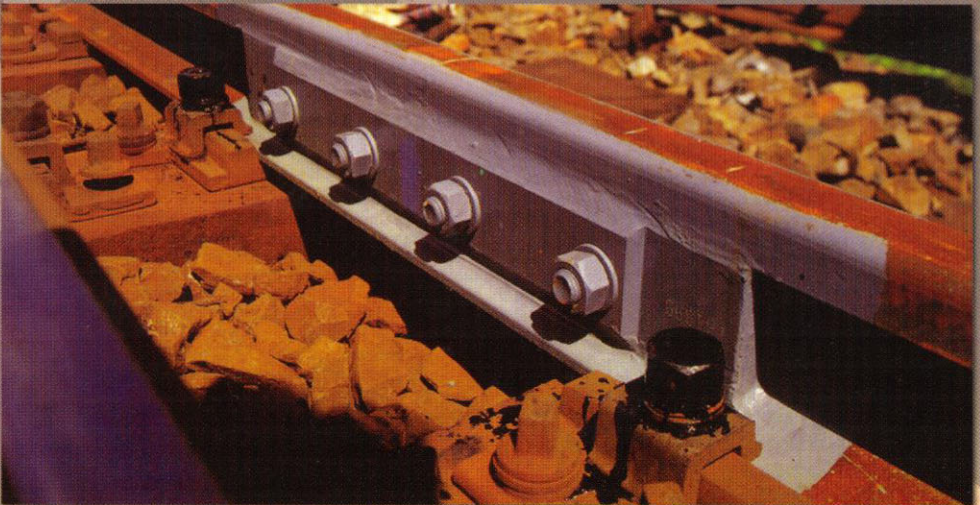
For applications in which a field assembled, glued insulated rail joint is required, the MT joint kit is a proven solution. Using insulated steel fishplates produced in our Brisbane plant, the insulating characteristics of the rail joint are guaranteed.

The MT Insulated Steel Fishplate consists of a high strength steel bar to which is bonded the insulation layer and a steel face plate. The Factory bonding ensures that maximum shear strength is obtained in between steel fishplate and faceplate.



Supplied as a kit, the MT rail joint is installed in track using ISOMOR 39 mortar, a fast curing adhesive system which provides maximum tensile strength and fatigue life of the joint for CWR track.

Over 20,000 MT rail joints have been installed throughout the world and are proven under all operating conditions. Data sheets and drawings are available for typical installations.



QUALITY

Thermit's objective is to deliver quality products and services to its Australian and International Customers.

The Quality management system implemented by Thermit for the production and supply of insulated rail joints has been independently assessed and accredited to ISO 9001:2000



Thermit Australia Pty Ltd

Po Box 76, Kariong NSW 2250

Phone: 61-43-404 988 Fax: 61-43-404 004

Queensland Office:

4-6 Brewer Street Clontarf QLD 4019

Phone: 61-7-3883 2855 Fax: 61-7-3883 2856

Email: philsaunders@thermit.com.au

www.thermit.com.au

ABN: 68 003 167 511

