



SMARTWELD ACE

ACCELERATED COOLING EQUIPMENT FOR THE ENHANCED COOLING OF ALUMINOTHERMIC WELDS

Through years of careful development Thermit Welding (GB) Ltd is proud to present the latest in weld cooling technologies. The SMARTWELD ACE is a purpose designed cooling unit used to minimise the time between casting a weld and when it is ready to grind.

AN EFFICIENT TIME SAVING METHOD

The SMARTWELD ACE is a purpose built battery powered water misting system, designed to be placed on top of an aluminothermic weld following the shearing of the weld. The unit has been built to deliver a pressurised water spray, via 3 x 0.35 mm mist spray nozzles, which provide optimum cooling without effecting weld integrity. This will mean that the unit is able to accelerate the overall cooling rate saving up to 15 minutes per weld. The SMARTWELD ACE can be purchased along with the Gull Wing Shear blades to increase the potential time saved per weld.

The unit is designed for increased productivity during weld installation where time is restricted due to short possession times (such as on Metro lines). The Product has also received full Plant and Product approval for use on TFL infrastructure.

RAIL JOINING

RAIL SERVICES

MEASUREMENT

TOOLS & MACHINES

EQUIPMENT

MEMBER OF



GOLDSCHMIDT
THERMIT GROUP

SMARTWELD ACE OVERVIEW

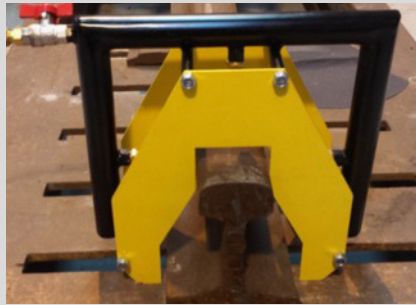
Feature	Function	Benefit
Cools via a fine mist spray	Sprays the weld material evenly and consistently, cooling it at a faster rate	Saves overall weld time by up to 15 min Cost savings as more welds can be completed in a set time frame
All cooling completed to defined timings	Means that the unit is able to stick to an optimum cooling rate preventing impurities and deficiencies being created.	High weld quality is maintained
Light weight and sturdy construction	Protects unit against damage and allows for easy transportation	The high manoeuvrability and simple design allows for high flexibility in locations that it can be used

Technical data

Pellicase Dimensions	374 mm x 260 mm x 154 mm
Weight	Pump / Control Unit - 13.4 KG Mist Cooling Head - 5.7 KG Water Container (Filled to max) - 24.2 KG
Battery	12 V 18 Ah Sealed Lead Acid (Maintenance free)
Head Pressure	6.89 Bar
Flow Rate	5.3 Litres / Min (When Unrestricted)

Components

- » Control Unit (in pellicase)
- » Cooling Head
- » 25 litre Water Container
- » Charger



RAIL JOINING

RAIL SERVICES

MEASUREMENT

TOOLS & MACHINES

EQUIPMENT